

# REALSTONE



**N**ova Distinctive Floors is proud to introduce a unique stone product. The initial goal was to produce a stone floor that would highlight the beauty and wear characteristics of the stone and minimize the inherently negative effects; cost, installation, coldness,

hardness, and the seams have all been concerns when dealing with stone. These concerns were addressed by developing the stone product into a floating floor. We took a very thin layer of natural slate and adhered it to a layer of high-density cork, which corrects the unevenness of the slate's backside. The cork also provides all of the natural benefits you have come to expect from cork: sound insulation, warmth, and softness.



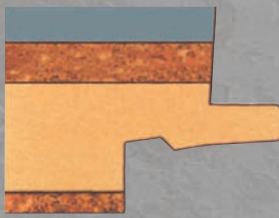
Our "click" layer is a FSC certified water resistant, high-density fiberboard. This provides very strong connection and incredibly tight seams. Cork is also added to the bottom of the HDF to provide further benefits. These uniquely beautiful patterns and their natural colors will satisfy the most discerning eye, while providing a well-designed quality product.

[www.novafloorings.com](http://www.novafloorings.com)



(866) 576-2458  
[sales@novaflooring.com](mailto:sales@novaflooring.com)

## Technical details: REALSTONE



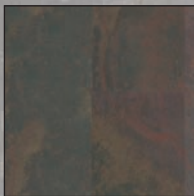
- ← 1.5 mm real stone or natural slate (high resistant PU layer)
- ← 1.5 mm high density cork composite
- ← 6.8 mm HDF (High density, moisture-retardant fiber board)
- ← 1.2 mm cork underlay

**UNICLIC**<sup>®</sup>  
Glueless click-system

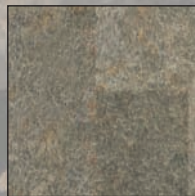
Gluedown version can be special ordered.

<b>Board Dimensions</b>		1.235 x 305 mm
<b>Total Thickness</b>		11 mm Click-System 3 mm Gluedown
<b>Impact Sound Reduction</b>	EN 140	17 dB
<b>Reaction to Fire</b>	DIN 4102	CFL s 1
<b>Coefficient of Friction</b>	DIN 51130	Slate R 10 – Mica Slate R 11
<b>Residual Indentation</b>	EN 433	Max. 0.10 mm
<b>Abrasion resistance</b>	EN 13329	> AC 5
<b>Office Chair</b>	EN 425	Fulfilled
<b>Reaction to Static Electricity</b>	EN 1815	< 2kv – antistatic
<b>Total Weight</b>		ca. 8.000 g/m <sup>2</sup>
<b>Admeasurement Stability</b>	EN 434	< 0.10%
<b>Emissions Value</b>		In conformity with U-sign
<b>Thermal Resistance</b>	EN 12667	0.121 (m <sup>2</sup> K/W)
<b>Chemical Attack</b>	DIN 68861-1	Passed

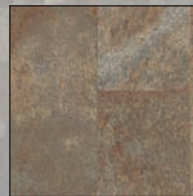
The details given above may be subject to change for the benefit of further improvements.



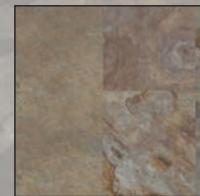
ARCOBALANTO



AURO



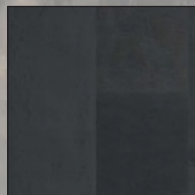
AURO OXYD



BLANCO



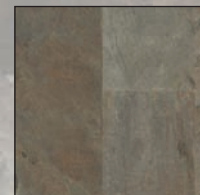
FALLING LEAVES



NEGRO



RUSTIQUE



VERDE GRIS



1710 East Sepulveda Blvd. • Carson, California 90745

TEL: (866) 576-2458 FAX: (310) 830-9589

[sales@novafloorings.com](mailto:sales@novafloorings.com)

[www.novafloorings.com](http://www.novafloorings.com)

